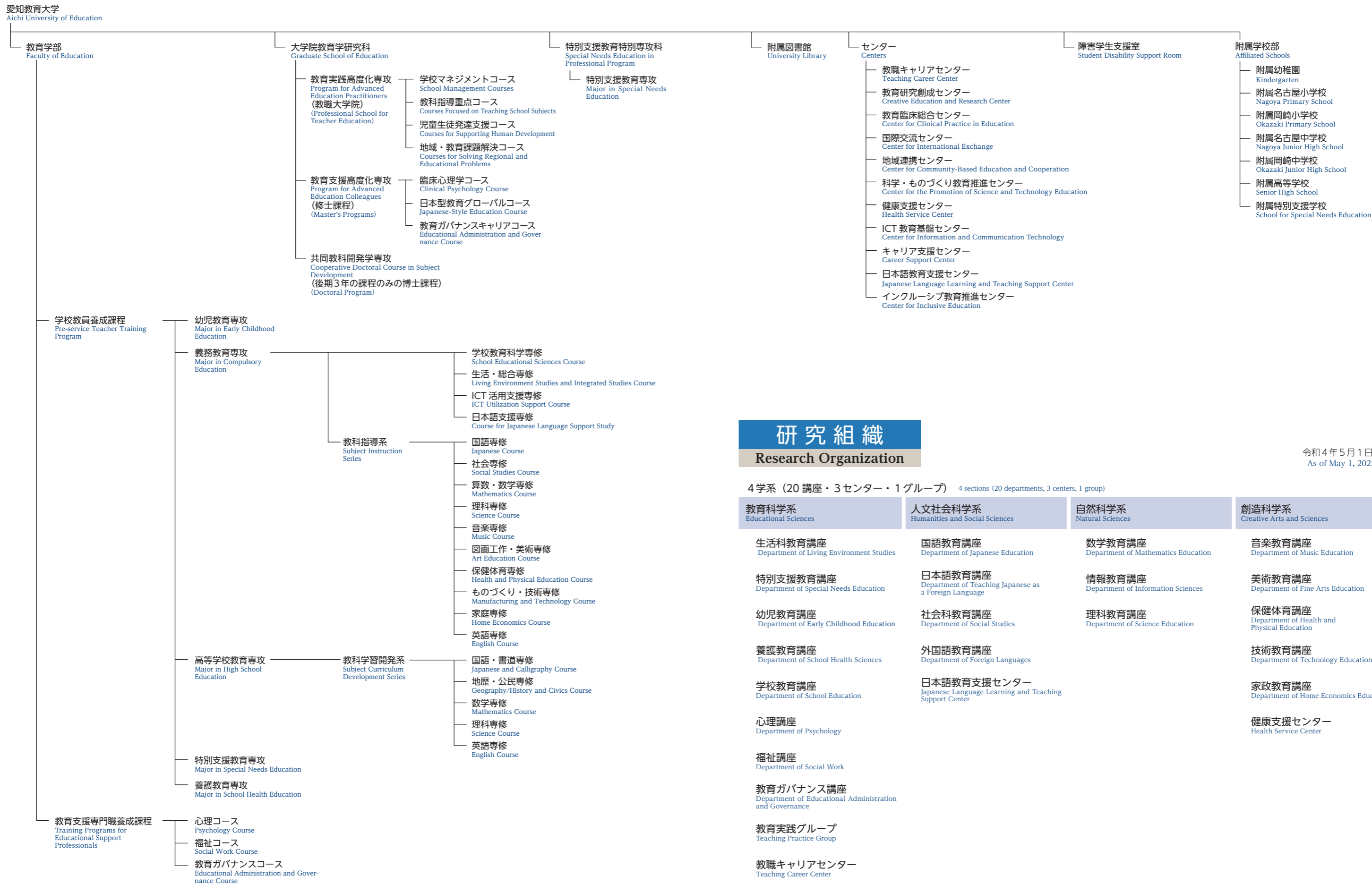


# 教育組織

## Educational Organization

令和4年5月1日現在  
As of May 1, 2022



# 研究組織

## Research Organization

令和4年5月1日現在  
As of May 1, 2022

4学系 (20講座・3センター・1グループ) 4 sections (20 departments, 3 centers, 1 group)

教育学系 Educational Sciences	人文社会科学系 Humanities and Social Sciences	自然科学系 Natural Sciences	創造科学系 Creative Arts and Sciences
生活科教育講座 Department of Living Environment Studies	国語教育講座 Department of Japanese Education	数学教育講座 Department of Mathematics Education	音楽教育講座 Department of Music Education
特別支援教育講座 Department of Special Needs Education	日本語教育講座 Department of Teaching Japanese as a Foreign Language	情報教育講座 Department of Information Sciences	美術教育講座 Department of Fine Arts Education
幼児教育講座 Department of Early Childhood Education	社会科学教育講座 Department of Social Studies	理科教育講座 Department of Science Education	保健体育講座 Department of Health and Physical Education
養護教育講座 Department of School Health Sciences	外国語教育講座 Department of Foreign Languages		技術教育講座 Department of Technology Education
学校教育講座 Department of School Education	日本語教育支援センター Japanese Language Learning and Teaching Support Center		家政教育講座 Department of Home Economics Education
心理講座 Department of Psychology			健康支援センター Health Service Center
福祉講座 Department of Social Work			
教育ガバナンス講座 Department of Educational Administration and Governance			
教育実践グループ Teaching Practice Group			
教職キャリアセンター Teaching Career Center			